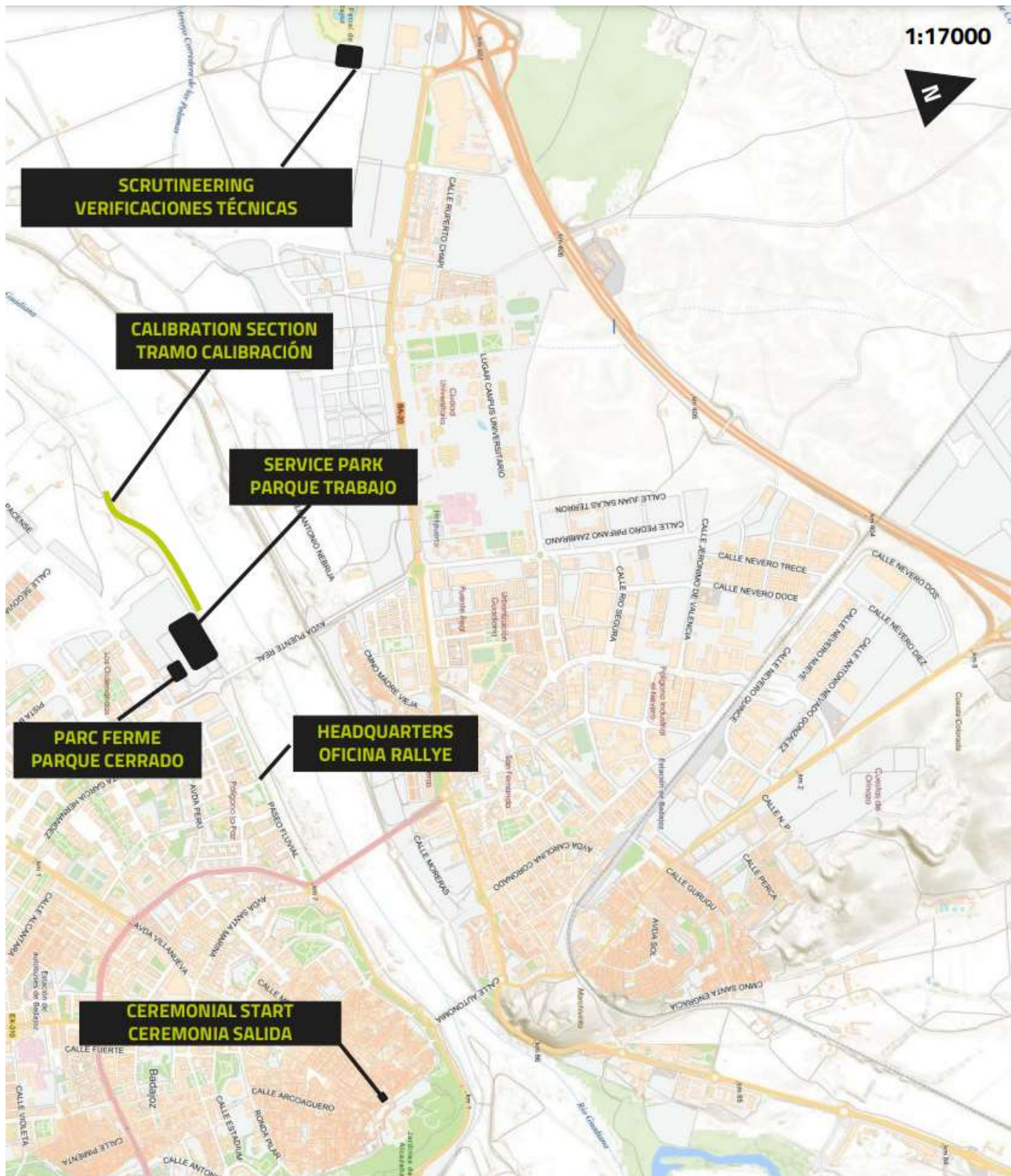
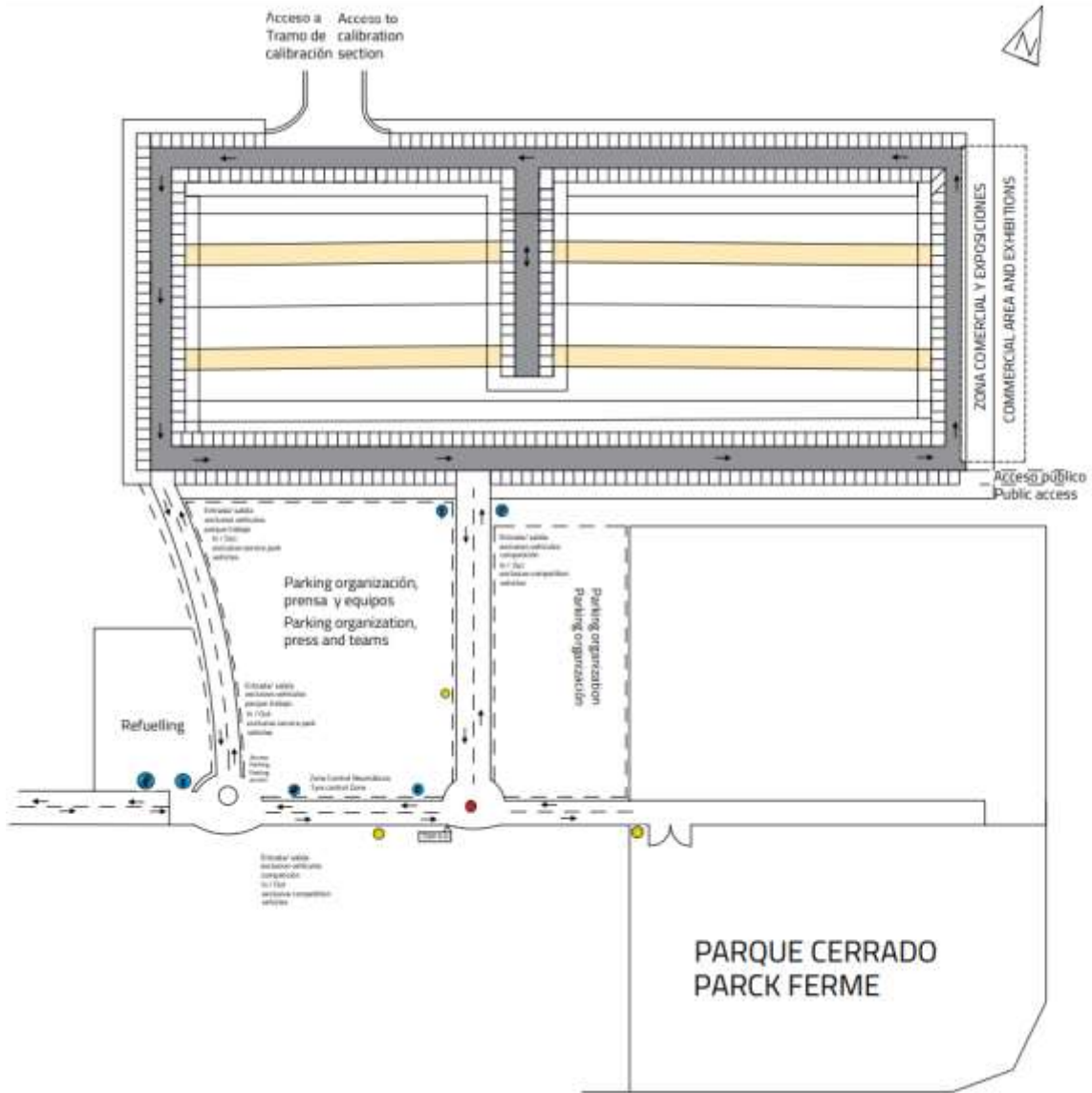


BADAJOZ





GASOLINERAS ENLACES / FUEL STATIONS LEASON

GASOLINERA/ STATIONS	FUEL	SITUACIÓN LOCATION	ENLACE FINAL QS LEASON FINISH QS	Km	DIRECCIÓN	COMBUSTIBLE FUEL
ETAPA 1A PROLOGO/ LEG 1A						
REPSOL		BADAJOZ	PARQUE CERRADO A PROLOGO PARQUE CERRADO A SS1 PARQUE TRABAJO A SS2 PARQUE CERRADO A SS3	3,43	C-436 P.K. 2,10 D, 06010 Badajoz	DIESEL-95-98

GASOLINERA/ FUEL STATIONS	SITUACIÓN LOCATION	ENLACE FINAL QS LEASON FINISH QS	Km	DIRECCIÓN	COMBUSTIBLE FUEL
ETAPA 1A PROLOGO/ LEG 1A					
REPSOL	BADAJOZ	START BAJA – PROLOGO SALIDA BAJA - PROLOGO	6,87	C-436 P.K. 2,10 D, 06010 Badajoz	DIESEL-95-98
CEPSA	BADAJOZ.		8,2	N-va, Pk 399, 6,	DIESEL-95-98
SSP PROLOGO					
GALP	BADAJOZ.	PROLOGO TO ELVAS	2,9	Av. Adolfo Díaz Ambrona, 60,	DIESEL-95-98
VALCARCE	BADAJOZ	PROLOGO A ELVAS	5,88	C. Antigua Frontera de Caya,	DIESEL-95
REAGRUPAMIENTO ELVAS					
BP/GALP	ELVAS	ELVAS TO PARQUE TRABAJO	0,06	Av. de Badajoz, Elvas, Portugal	DIESEL-95-98
VALCARCE	BADAJOZ	ELVAS A PARQUE TRABAJO	13,50	C. Antigua Frontera de Caya,	DIESEL-95

GASOLINERA/ FUEL STATIONS	SITUACIÓN LOCATION	ENLACE LEASON	KM	DIRECCIÓN	COMBUSTIBLE FUEL
ETAPA 1B/ LEG 1B					
REPSOL	BADAJOZ	STAGE 1B DAY 2 –SS1B ETAPA 1B DÍA 1- SS1B	1,8	CR C-436 P.K. 2,10 D,	DIESEL-95-98
24h M&D	OLIVENZA		23,2	EX-107, km 23.4,	DIESEL-95
CEPSA	OLIVENZA		23,8	Av. Nicaragua, S-N,	DIESEL-95-98
REPSOL	OLIVENZA		23,6	Ex107 Km 23,	DIESEL-95
CEPSA	ALCONCHEL		43,4	EX-107, PK 43.5,	DIESEL-95
SS1B					
SOCIEDAD	ZAHINOS	SS1B – REAGROUP SS1B- REAGRUPAMIENTO	1,54	BA-078	DIESEL-95
CEPSA	ALCONCHEL		27,45	EX - 107	DIESEL-95
REPSOL	OLIVENZA		47,18	EX-107, 06100, Badajoz	DIESEL-95
REPSOL	OLIVENZA		47,18	Ex107 Km 23,	DIESEL-95
CEPSA	OLIVENZA		47,72	Av. Nicaragua, S-N,	DIESEL-95-98
24h M&D	OLIVENZA		47,72	EX-107, km 23.4,	DIESEL-95
SERVICE PARK					
REPSOL	BADAJOZ	SERVICE PARK –SS2 PARQUE DE TRABAJO- SS2	1,8	CR C-436 P.K. 2,10 D,	DIESEL-95-98
24h M&D	OLIVENZA		23,2	EX-107, km 23.4,	DIESEL-95
CEPSA	OLIVENZA		23,8	Av. Nicaragua, S-N,	DIESEL-95-98
REPSOL	OLIVENZA		23,6	Ex107 Km 23,	DIESEL-95
CEPSA	ALCONCHEL		43,4	EX-107, PK 43.5,	DIESEL-95

GASOLINERA/ FUEL STATIONS	SITUACIÓN LOCATION	ENLACE LEASON	KM	DIRECCIÓN	COMBUSTIBLE FUEL
SOCIEDAD	ZAHINOS		13,20	BA-078	DIESEL-95
CEPSA	ALCONCHEL		39,11	EX - 107	DIESEL-95
REPSOL	OLIVENZA		58,84	EX-107, 06100, Badajoz	DIESEL-95
REPSOL	OLIVENZA		58,84	Ex107 Km 23,	DIESEL-95
CEPSA	OLIVENZA		59,39	Av. Nicaragua, S-N,	DIESEL-95-98
24h M&D	OLIVENZA		59,39	EX-107, km 23.4,	DIESEL-95

GASOLINERA/ FUEL STATIONS	SITUACIÓN LOCATION	ENLACE LEASON	KM	DIRECCIÓN	COMBUSTIBLE FUEL
ETAPA 1B/ STAGE 1B					
REPSOL	BADAJOZ		3,43	C-436 P.K. 2,10 D, 06010 Badajoz	DIESEL-95-98
CEPSA	BADAJOZ.		7	N-va, Pk 399, 6,	DIESEL-95-98
REPSOL	CORTE PELEAS		37,43	Cr, Ba-9032, 30, 6 I, 06196 Corte de Peleas, Badajoz	DIESEL-95
SS3					
CEPSA	BADAJOZ		22,19	N-va, Pk 399, 6,	DIESEL-95-98

REFUELLIN STAGE 1B / REFUELLING ETAPA 1B

1º bike /moto	Km 41,7
1º bike/moto	Km 41,7

C/ Ramon
Mesa
Rivera,



Zahinos

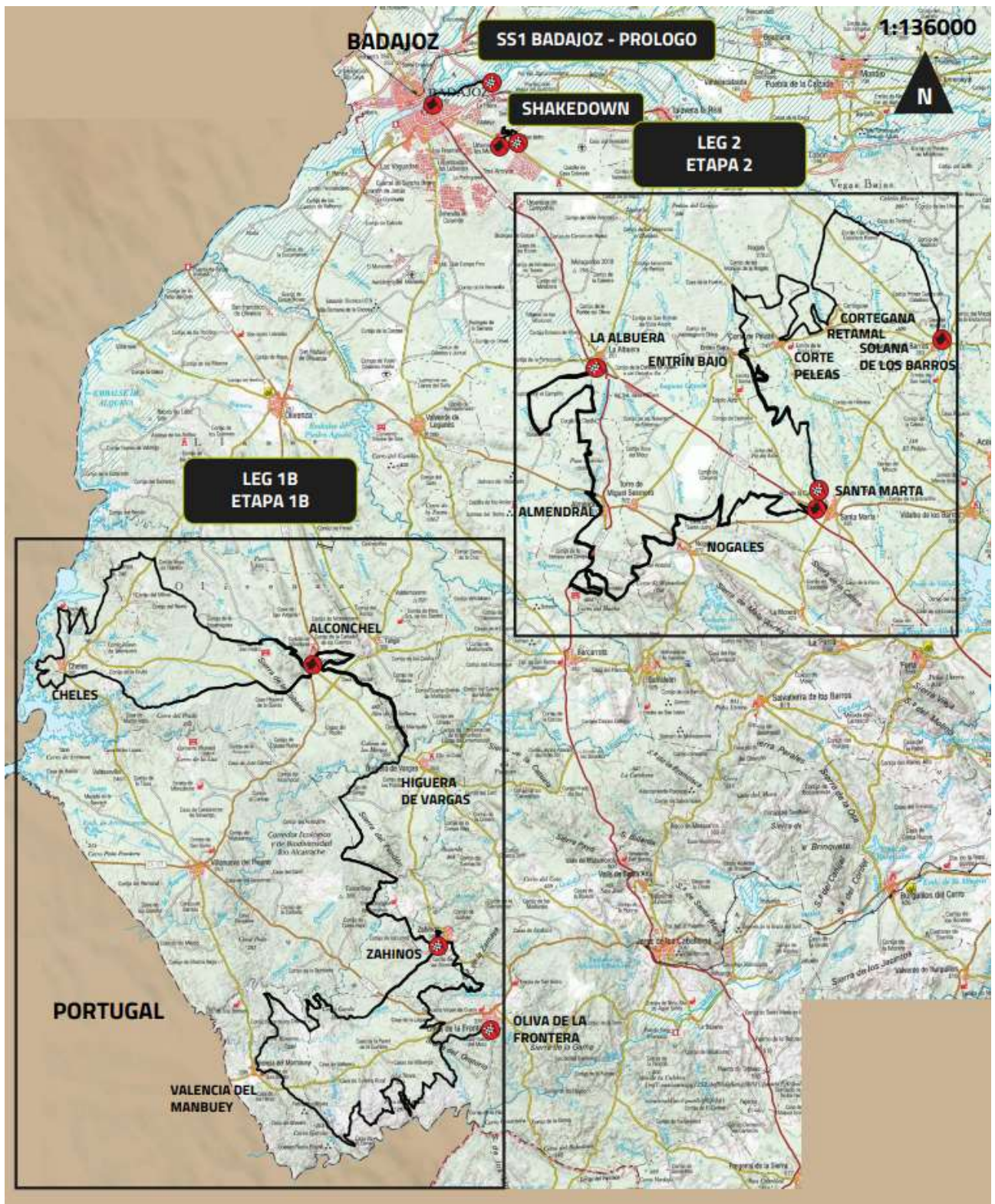
Acceso: C/ Miguel hernández

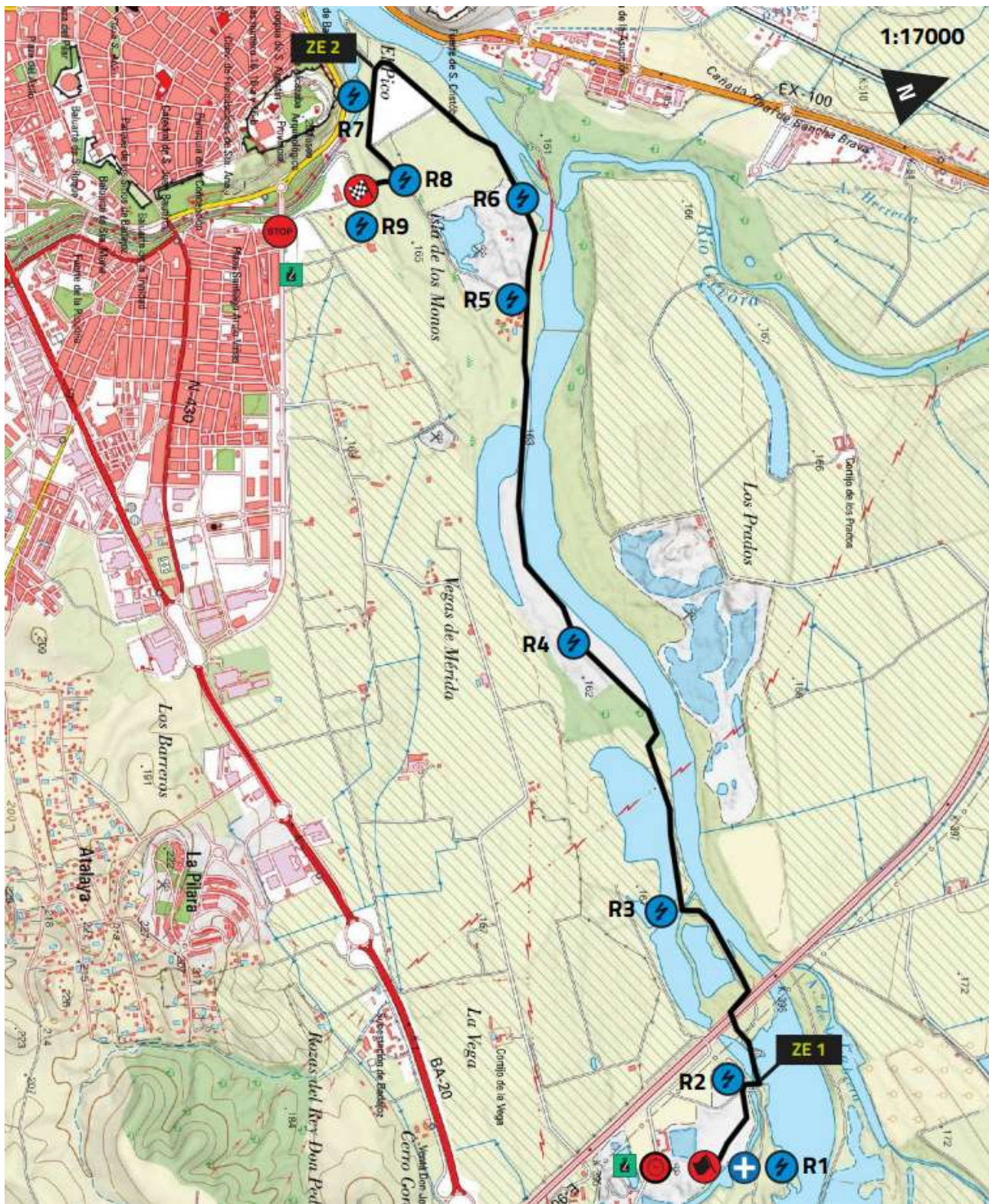
38° 19'38.5"N 6° 57'45.9"W

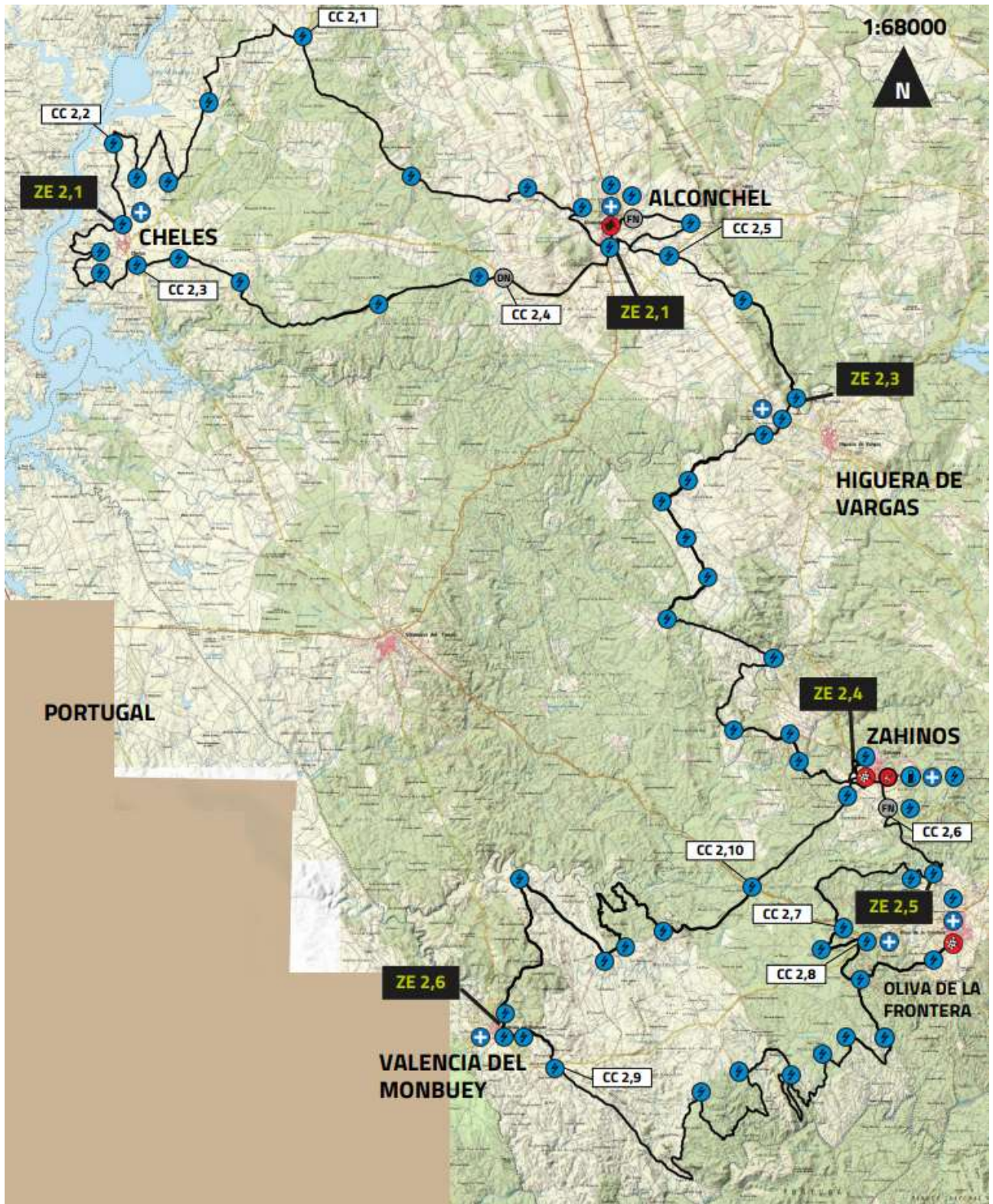
Junto a la llegada / next to the arrival

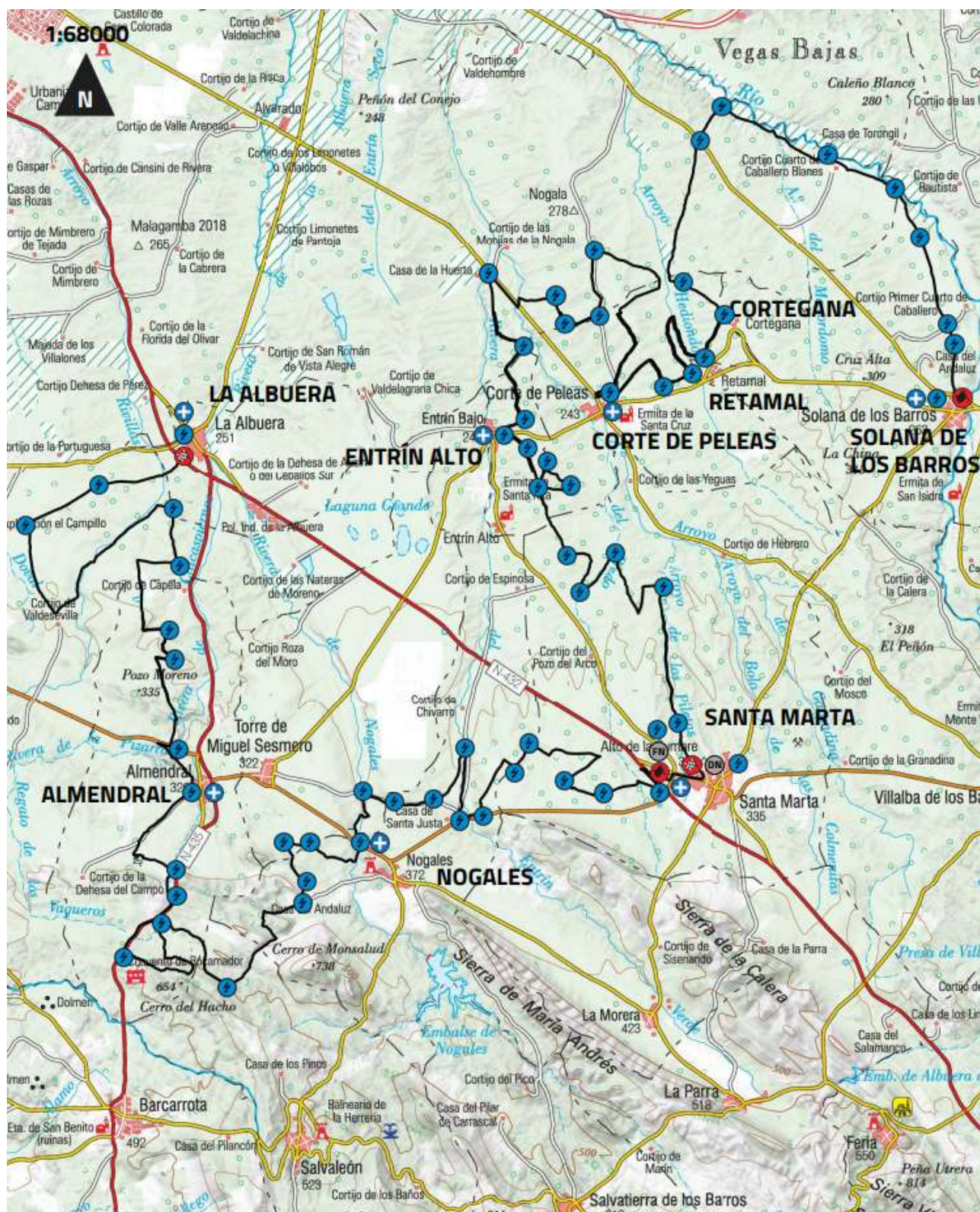


	Recorrido competición/ competition track
	Recorrido asistencia / service track









ITINERARY / ITINERARIO

Etapa 1A/Leg 1A Día 1/Day 1		Viernes 14 Abril 2023 / Friday April 14th 2023				
Amanece/Sunrise 7:51		Anochece/Sunset 21:01				
TC	Localización/Location	SS	Enlace/Liason	Total	Tiempo	1º Moto/Bike
SS		Km	Km	Km	Time	hora
0	Salida Parque Cerrado/ Start Parc ferme (Badajoz)					14:54
1	TC SS1 Badajoz		12,96	12,96	0:33	15:27
DSS P	SS P Badajoz - Prologo				(0:05)	15:30
ASS P	Stop Badajoz (SS1A maximum time/tiempo máximo: 0:30h)	5,9	hora aproximada llegada/expected time of arrival			(15:33)
1B	Entrada reagrupamiento/Regroup In (Elvas/Portugal)		19,77	38,63	1:00	(16:33)
1C	Salida reagrupamiento - Regroup OUT (Elvas/Portugal)					18:40
1D	Entrada Asistencia/Service IN (Badajoz)		18,33		0:40	19:20
	Asistencia/Service 1 (Badajoz)				0:20	
1E	Salida Asistencia/Service OUT (Badajoz)		5,14	56,96		19:40
1F	Entrada parque cerrado ceremonia salida/ parc ferme Ceremonial Start In			62,1	0:20	20:10
	Ceremonia Salida/Ceremonial Start (Plaza alta Badajoz)					
1G	Salida parque cerrado / parc ferme Ceremonial Start OUT (Badajoz-Alcazaba)					20:20
1H	Entrada Parque Cerrado/ Parc ferme In (Badajoz)*		3,43	65,53	0:40	(21:00)*
Km etapa/leg 1		5,9	59,63	65,53		
Porcentaje/ percentage %		9,00	91,00	100%		

*tiempo máximo, autorizado el adelanto en este control/maximum time, check-in advance is authorized
 Las horas entre parenteris son horas aproximadas/ The time in brackets are approximate
 Posibilidad refuelling gasolineras indicadas por la organización/ Possible Refuelling commercial filling stations indicated by organization
 El uso horario será el de España UTC+2 en toda la etapa / The time zone will be that of Spain UTC+2 throughout the stage /

Etapa 1B/Leg 1B Dia 2/Day 2

Sábado 15 Abril 2023 / Saturday April 15th 2023

Amanece/Sunrise 7:30

Anochece/Sunset 21:16

TC	Localización/Location	SS Km	Enlace/Liason Km	Total Km	Tiempo Time	1º Moto/Bike hora
11	Salida Parque Cerrado/ Start Parc ferme (Badajoz)					6:45
2	TC SS1 A Alconchel		43,9	43,9	0:55	7:40
DSS1A	SS1 Alconchel				(0:05)	7:45
ASS1A	Zahinos (SS1B maximum time/tiempo máximo: 1:00 h)	39,99				(8:15)
Zona Neutralizada/Neutralisation Zone						
RZ1	Zona Refuelling/ Refuelling Zone	41,7				
	Distancia final tramo/ Distance to finish stage	(93,2)	(0,0)	(93,2)	0:07	
DSS1B	Zahinos		2,53		0:15	(9:05)
ASS1B	SS1 Stop Zahinos (SS1C maximum time/tiempo máximo: 2:00 h)	92,38	hora aproximada llegada/expected time of arrival			(9:45)
2B	Entrada reagrupamiento/Regroup In (Badajoz)		72,08	250,88	1:20	(11:05)
2C	Salida reagrupamiento/Regroup OUT -Entrada Asistencia/Service IN (Badajoz)					12:00
	Asistencia/Service 2 (Badajoz)				0:45	
2D	Salida Asistencia/Service OUT (Badajoz)			250,88		12:45
3	TC SS2 Alconchel		43,9	294,78	0:55	13:40
DSS2A	SS2 Alconchel				(0:05)	13:45
ASS2A	Alconchel (SS2A maximum time/tiempo máximo: 1:30h)	64,46				(14:45)
Zona Neutralizada/Transfer Zone						
DSS2B	Alconchel		6,75		0:15	(15:00)
ASS2B	Zahinos (SS2B maximum time/tiempo máximo: 1:00h)	44,74				(15:40)
Zona Neutralizada/Transfer Zone						
RZ3	Zona Refuelling/ Refuelling Zone	111				
	Distancia final tramo/ Distance to finish stage	(93,2)	(0,0)	(93,2)	0:07	
DSS2C	Zahinos		2,53		0:15	(15:55)
ASS2C	Stop SS2 Zahinos (SS2C maximum time/tiempo máximo: 2:00h)	92,38	hora aproximada llegada/expected time of arrival			(17:15)
3B	Entrada asistencia/Service IN (Badajoz)*		72,04	577,68	1:20	(18:35)*
	Asistencia/Service 3 (Badajoz)				3:00	
3C	Salida asistencia/Service OUT (Badajoz)*					(21:35)*
3D	Entrada Parque Cerrado/parc ferme In (Badajoz)*				0:40	(22:15)*
Km etapa/leg 2		333,95	243,73	577,68		
Porcentaje/ percentage %		57,81	42,19	100%		

Sección/Section 3

Sección/Section 4

*tiempo máximo, autorizado el adelanto en este control/maximum time, check-in advance is authorized

Las horas entre parentesis son horas aproximadas/ The hours are between parentesis are approximate hours

Posibilidad refuelling gasolineras indicadas por la organización/ Possible Refuelling commercial filling stations indicated by organization

(17:00)



Etapa2/Leg 2 Dia 3/Day 3

Domingo 16 Abril 2023 / Sunday April 26th 2023

Amanece/Sunrise 7:30

Anochece/Sunset 21:16

TC	Localización/Location	SS	Enlace/Liason	Total	Tiempo	1º Moto/Bike
SS		Km	Km	Km	Time	hora
3E	Salida Parque Cerrado/ Start Parc ferme (Badajoz)					7:00
4	TC SS3 Santa Marta		48,87	48,87	0:55	7:55
DSS3	SS3 Santa Marta				(0:05)	8:00
ASS3	SS3 La Albuera (SS4 maximum time/tiempo máximo: 1:45h)	78,28	<i>hora aproximada llegada/expected time of arrival</i>			(9:05)
4B	Entrada reagrupamiento/Regroup In (Badajoz)		25,9	153,05	0:40	(9:45)

Sección/Section 5

4C	Salida reagrupamiento/Regroup OUT -Entrada Asistencia/Service IN (Badajoz)					10:40
	Asistencia/Service 2 (Badajoz)				0:45	
4D	Salida Asistencia/Service OUT (Badajoz)					11:25
5	TC SS3 Solana de los Barros		50,62	203,67	1:00	12:25
DSS4	SS3 Solana de los Barros (SS4 maximum time/tiempo máximo: 1:45h)				(0:05)	12:30
ASS4	Stop SS3 Santa Marta	75,58	<i>hora aproximada llegada/expected time of arrival</i>			(13:35)
5B	Entrada Parque Cerrado / Parc ferme In (Badajoz)*		46,77	326,02	1:00	(14:35)*

Sección/Section 6

Km etapa/leg 2	153,86	172,16	326,02
Porcentaje/ percentage %	47,19	52,81	100%

KILOMETROS BAJA MOTOS / BIKE				
	SS	Enlace	Total	%
ETAPA 1A / LEG 1A: Viernes 14 Abril 2023 / Friday April 14th 2023				
SSP Prologo	5,9	59,63	65,53	8,85
ETAPA 1B / LEG 1B: Sábado 15 Abril 2023 / Saturday April 15th 2023				
SS1/SS2	339,1	254,38	577,68	57,08
ETAPA 2 / LEG 2: Domingo 16 Abril 2023 / Sunday April 26th 2023				
SS3/SS4	155	172,16	326,02	66,87
TOTAL:	500	486,17	969,23	51,59

*tiempo máximo, autorizado el adelanto en este control/maximum time, check-in advance is authorized

Las horas entre parenteris son horas aproximadas/ The hours are between parenteris are approximate hours

Posibilidad refuelling gasolineras indicadas por la organización/ Possible Refuelling commercial filling stations indicated by organization

(17:00)



SIMBOLOS / LEXICON

TRACKS	WAYPOINTS	ON TRACK	SYMBOLS
Tarmac road	Masked WP	Bump	Fence
Track Piste	Control WP	Dip hole	Barbed fence
Off track (HP)	Security WP	Compression	Rail road
Low visible track / traces	Navigation WP	Ditch	Hole
P Track Piste	Precise WP	Summit	Collapse, ditch, ravine, etc.
PP Principal track/ piste	Visible WP	Above bridge	Ruts
RO Road	Eclipse WP	Under bridge	Twisty / sinuous
P// Parallel track/piste	Waypoint number	Step up	Bumpy / broken
HP Off track Sight driving I	CONTROLS		Step down
HP Off track forbidden	Start Selective Section	Up hill Down hill	Lateral inclination
FPP Follow principal track/piste	Arrival Selective Section	Cut danger	Post
FRO Follow road	Check point	Right or Left over crest	Electric pole
SA Sandy	Start/Finish Neutralisation	Fence gate	Electric line
GV Gravel	Start neutralisation with speed limit	Fence with cattle gate	High voltage tower
SAFETY	Start/Finish Transfer	Wall gate	Antenna
Danger Level 1	Start transfer with speed limit	Wading / water cross	Well
Danger Level 2	Neut./transfer max. time allowed	Concrete pass	Tanks
Danger Level 3	Waiting for restart	CAPS	Barrels
Global danger in the note	Stop for restart	CAP Exit cap	Notable elements
Start Speed limit	Fuel zone with authorized cat.	CAP_A Average cap	Tires
Finish Speed limit	Time control	CAP_o Calculated cap (only HP)	Sign posts
Stop	Assistance Service	OBLIC Cap that turns	Restricted/protected area
Important	Tyre marking zone		Buildings / houses
25.25 Red line under km = danger 2 in the note	End zone		Church / mosque

SYMBOLS	SYMBOLS	ABBREVIATIONS	ABBREVIATIONS
Ruine / abandoned	Small wadi	VG Vegetation	EFF Collapsed
Fort / castle	Large wadi	L/R Left and Right	ORN Ruts
Cemetery	Sandy wadi	R/L Right and Left	BAD Bad
Village	River (water)	onL On left	RP Rejoin
Bivouac	Lake / puddle	onR On right	BTW Between
Tunnel	Plain / chott	kpL Keep to the left	MODIF Modification from Opening Car
Pipeline	Towards / direction	kpR Keep to the right	NEW NOTE New note from Opening Car
Wall	Road works	kpS Keep straight	BIG SMALL FOLLOW Written as text (English)
Native / local camp	Reset / recal trip	-V Less visible*	
Petrol station & type of fuel	Distance	±V More/less visible	
Monument	DUNES / SAND	ALT Alternance	
Animals individual	Sandy plain	/ During	
Animals	Big bowl "cuvette"	IN In / into	
Cairn	Sand spit	ET And / next	
Rocks	Dune	A At	
Mountain	Broken dune	CX Stone / stony	
Tree	Dunes	E3 Narrow*	
Palm tree	DN Dune	Q^T Quit / leave*	
Camel grass	DNX Many dunes	TJS Always	
Vegetation	DNT Small dune "dunette"	NBX Many	
Slope	L1 L2 L3 Dunes difficulty level	IMP Imperative	